

CANDIDATE  
NAME

--

CENTRE  
NUMBER

--	--	--	--	--

CANDIDATE  
NUMBER

--	--	--	--

**GEOGRAPHY**

**0460/22**

Paper 2

**May/June 2017**

**1 hour 30 minutes**

Candidates answer on the Question Paper.

Additional Materials:      Ruler  
                                         Protractor  
                                         Plain paper  
                                         Calculator

1:25 000 Survey Map Extract is enclosed with this Question Paper.

**READ THESE INSTRUCTIONS FIRST**

Write your Centre number, candidate number and name in the spaces provided.

Write in dark blue or black pen.

You may use an HB pencil for any diagrams or graphs.

Do not use staples, paper clips, glue or correction fluid.

**DO NOT WRITE IN ANY BARCODES.**

Write your answer to each question in the space provided.

If additional space is required, you should use the lined pages at the end of the booklet. The question number(s) must be clearly shown.

Answer **all** questions.

The Insert contains Photograph A for Question 3, and Photographs B and C for Question 5.

The Survey Map Extract and the Insert are **not** required by the Examiner.

Sketch maps and diagrams should be drawn whenever they serve to illustrate an answer.

At the end of the examination, fasten all your work securely together.

The number of marks is given in brackets [ ] at the end of each question or part question.

Definitions

MEDCs – More Economically Developed Countries

LEDCs – Less Economically Developed Countries

The syllabus is approved for use in England, Wales and Northern Ireland as a Cambridge International Level 1/Level 2 Certificate.

This document consists of **17** printed pages, **3** blank pages and **1** Insert.

1 Study the map extract for Lønnavatnet, Norway. The scale is 1:25 000.

Fig. 1 shows some of the features around the lake of Lønnavatnet. Study Fig. 1 and the map extract, and answer the questions below.

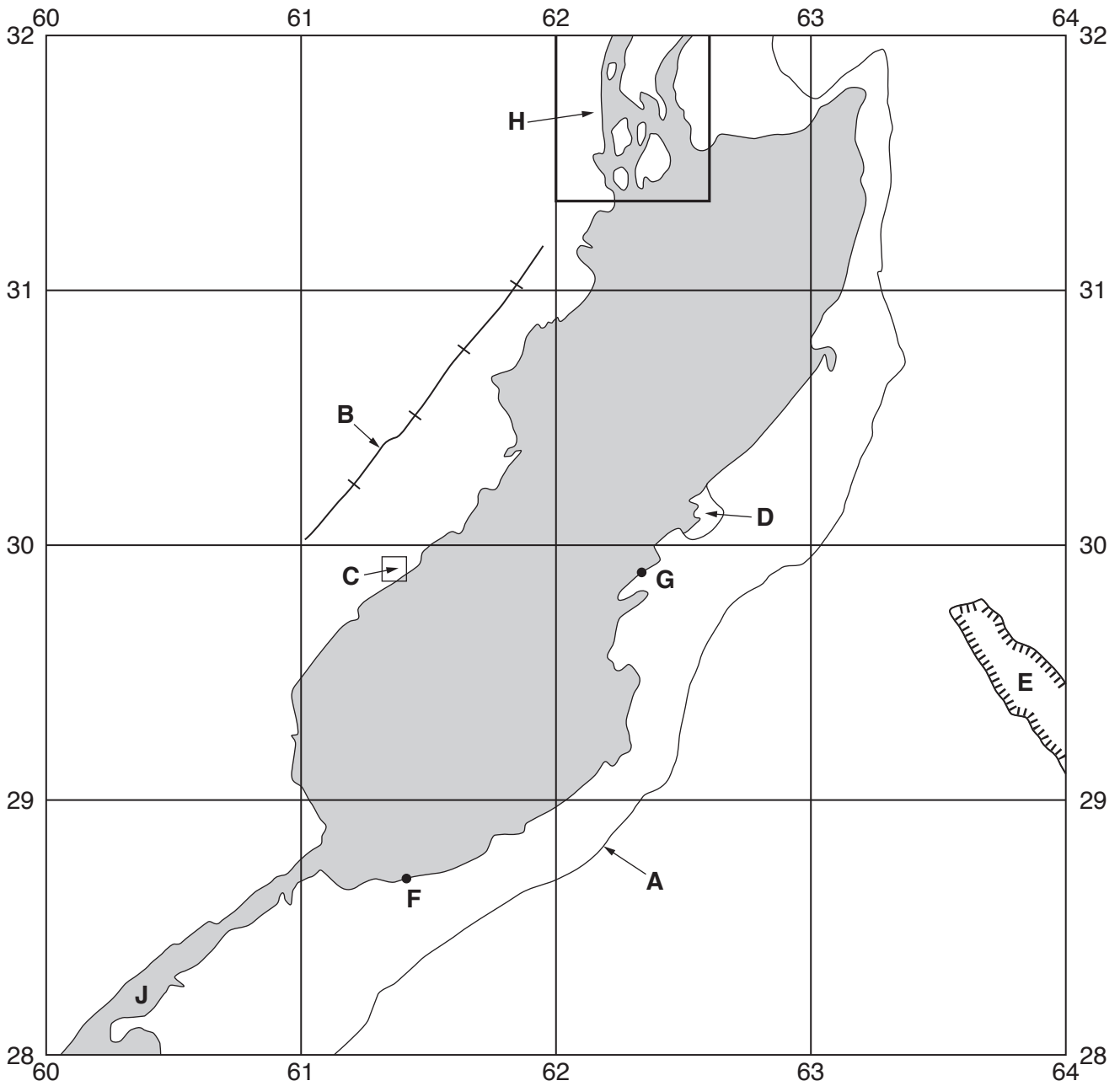


Fig. 1

(a) Using the map extract, identify the following features shown in Fig. 1:

(i) feature A;

.....[1]

(ii) feature B;

.....[1]

(iii) feature **C**;  
.....[1]

(iv) the type of land at **D**;  
.....[1]

(v) feature **E**.  
.....[1]

(b) (i) Estimate the area of the lake of Lønavatnet. Circle **one** correct answer below.

3 km<sup>2</sup>                  5 km<sup>2</sup>                  7 km<sup>2</sup>                  9 km<sup>2</sup>                  [1]

(ii) A person walks along the edge of the lake from **F** to **G**. How far does the person walk?  
Circle **one** correct answer below.

1525 m                  2225 m                  2975 m                  3675 m                  [1]

(c) (i) Identify the river feature in area **H**.  
.....[1]

(ii) On Fig. 1, **draw an arrow** to show the direction of flow of the river at **J**. [1]

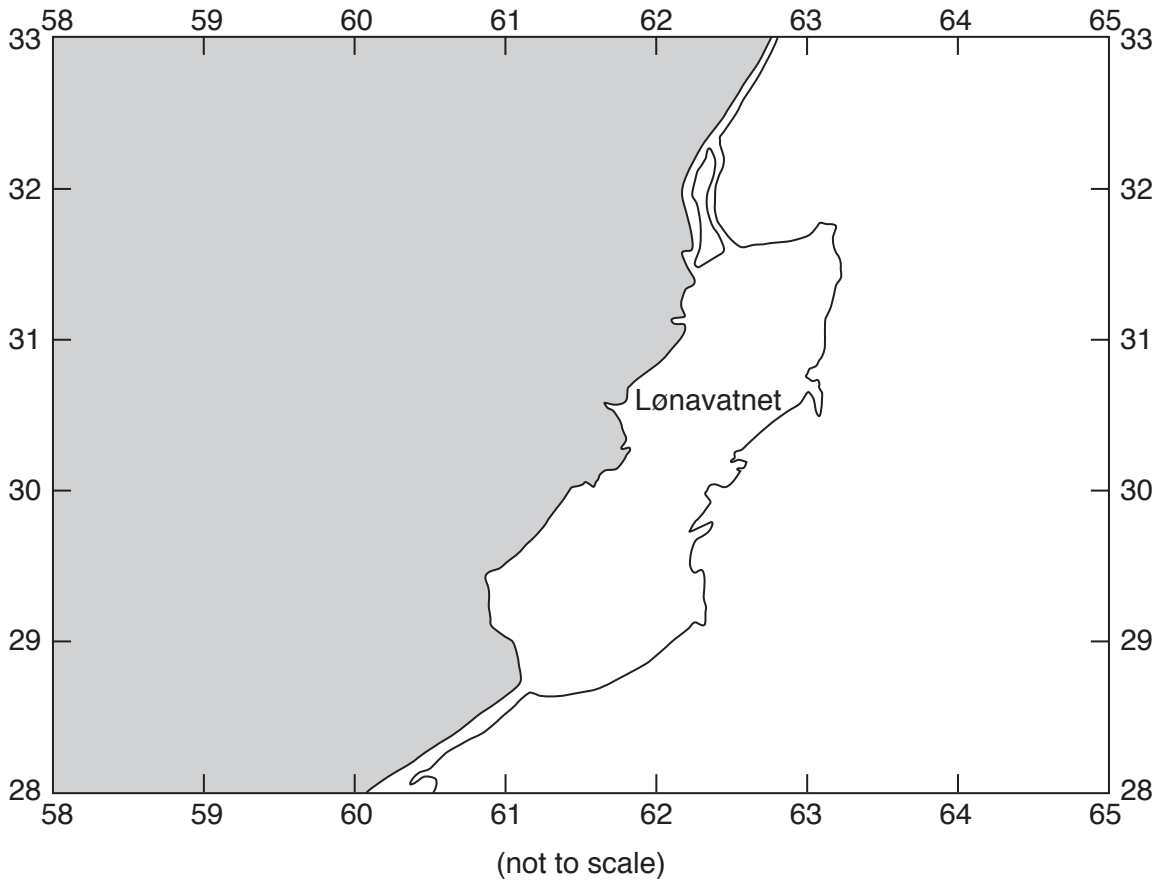
(d) The main types of land use in the area of the map extract are forest and cultivation.

(i) Forest does not grow on the highest land. What is the general upper limit of forest growth on the west side of Lønavatnet? Circle **one** correct answer below.

400 m                  600 m                  800 m                  1000 m                  [1]

(ii) Describe the distribution of cultivation in the area shown on the map extract.  
.....  
.....  
.....  
.....  
.....  
.....  
.....[3]

(e) In Fig. 2 the area west of the lake is shaded.



**Fig. 2**

(i) Using the map extract, describe the relief of the area shaded in Fig. 2.

.....  
.....  
.....  
.....  
.....  
.....  
.....  
.....  
.....  
.....  
.....[4]

(ii) Describe the drainage of the area shaded in Fig. 2.

.....

.....

.....

.....

.....

.....

.....

.....

.....

.....

[3]

[Total: 20 marks]

- 2 Study Figs. 3, 4 and 5 which show population growth rates, birth rates and death rates for France, a country in Europe. Answer the questions on the opposite page.

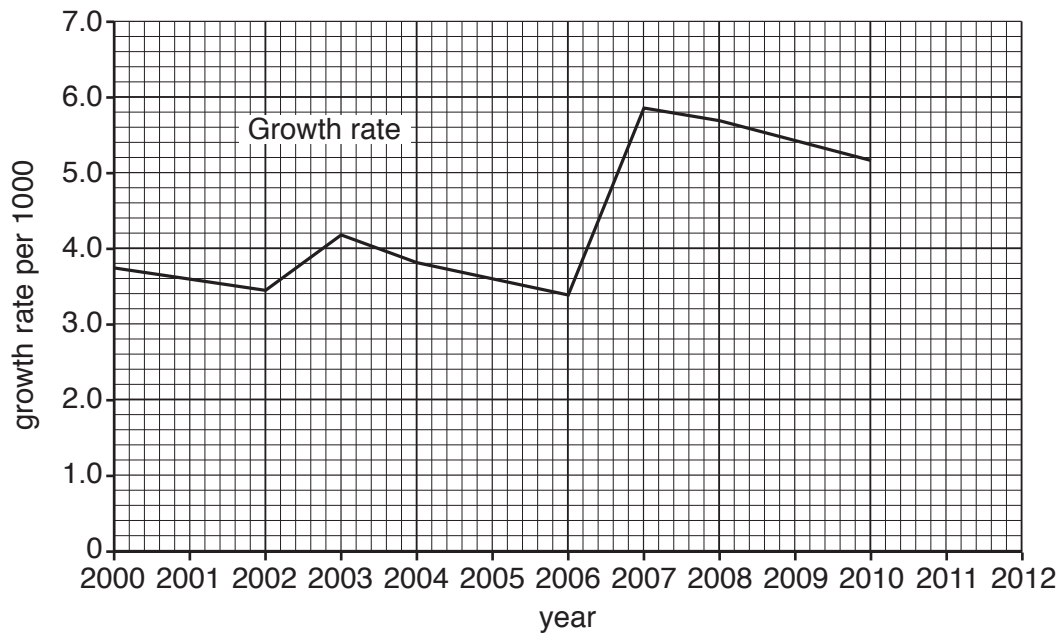


Fig. 3

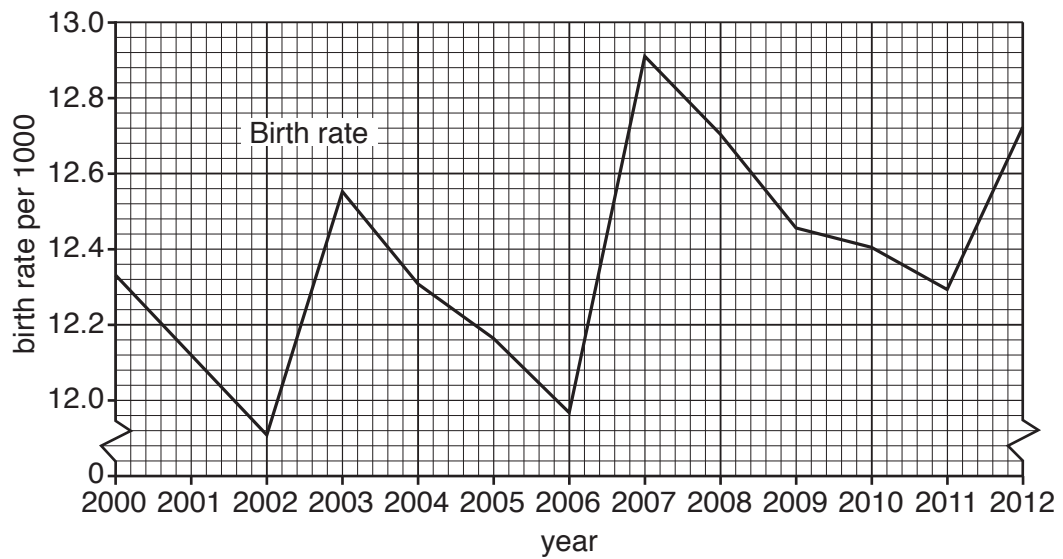


Fig. 4

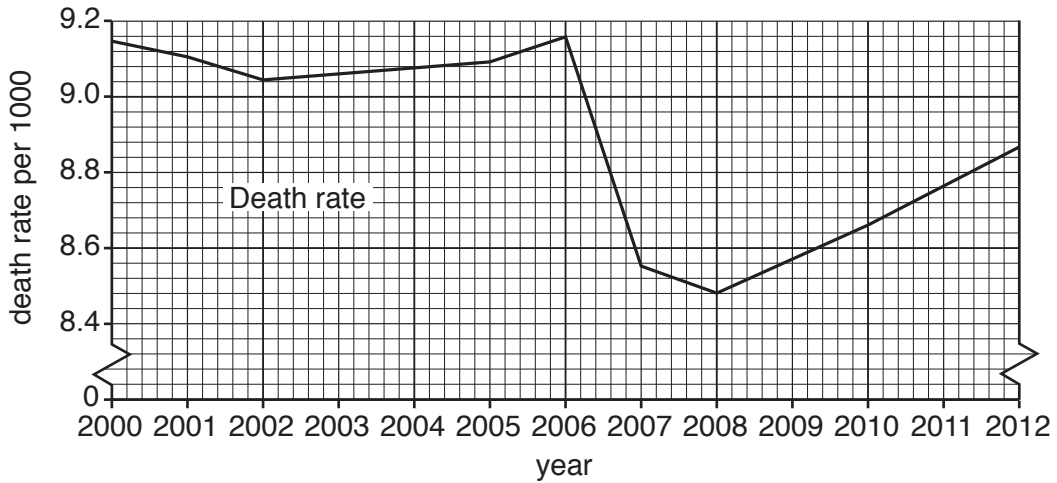


Fig. 5

(a) The population growth rate for France in 2011 and 2012 was 5.0 per thousand. **Plot** this information on Fig. 3. [1]

(b) (i) Using Fig. 3, describe the change in population growth rates between:

2000 and 2006;

.....  
 .....

2006 and 2007;

.....  
 .....

2007 and 2010.

.....  
 ..... [3]

(ii) Using Figs. 4 and 5 **only**, explain the change in population growth rate between 2006 and 2007.

.....  
 ..... [1]

- (c) Using Figs. 4 and 5, calculate the natural population increase in 2001. Show your working in the box below.

[2]

- (d) Why does the difference between the birth rates and death rates shown on Figs. 4 and 5 not exactly equal the population growth rates shown in Fig. 3?

.....

.....[1]

[Total: 8 marks]



3 Study Photograph A (Insert), which shows a rural area in Africa.

(a) Describe the site of the settlement shown in Photograph A.

.....  
.....  
.....  
.....  
.....[2]

(b) Describe the residential area in the foreground of the photograph (area X) and the residential area in the background of the photograph (area Y).

Residential area in the foreground of the photograph (area X)

.....  
.....  
.....  
.....  
.....  
.....  
.....  
.....  
.....  
.....  
.....

Residential area in the background of the photograph (area Y)

.....  
.....  
.....  
.....  
.....  
.....  
.....[6]

[Total: 8 marks]

4 Fig. 6 shows areas of hot desert in the southern hemisphere.

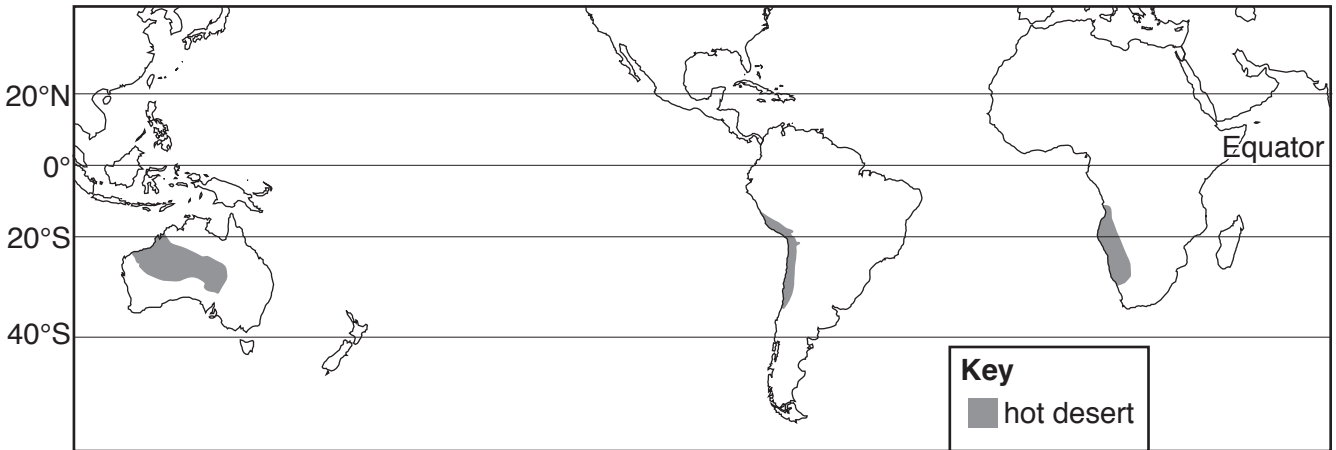


Fig. 6

(a) Describe the distribution of hot deserts shown in Fig. 6.

.....

.....

.....

.....

.....

.....[2]

(b) Fig. 7 shows the climate of a place in one of the hot desert areas shown in Fig. 6.

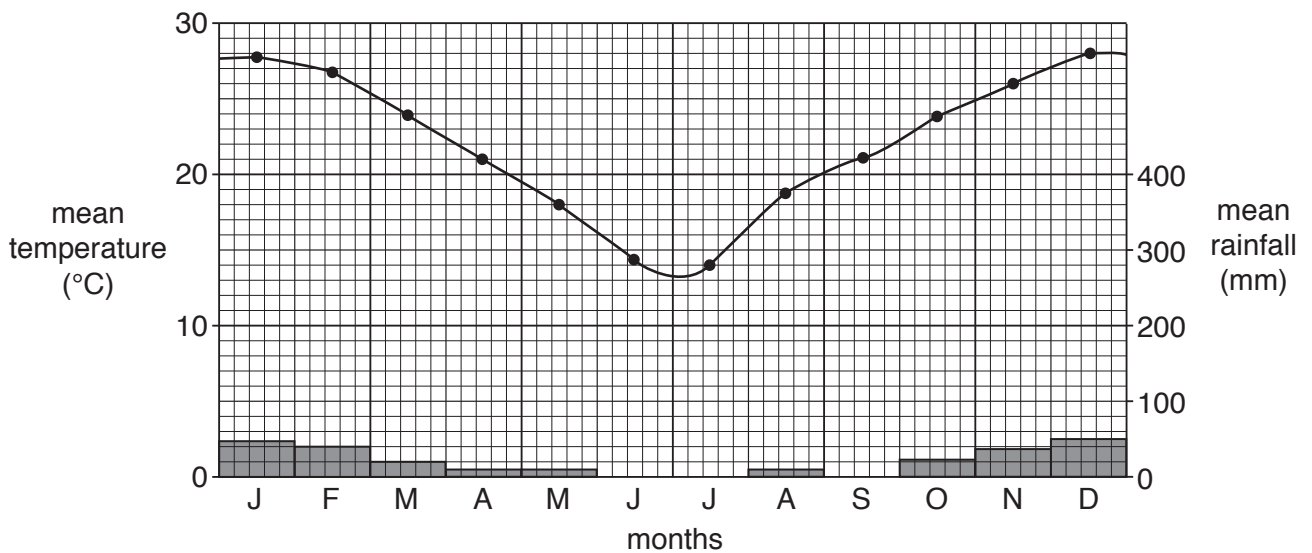


Fig. 7

(i) What evidence from Fig. 7 shows that this is a place in the southern hemisphere?

.....  
 .....[1]

(ii) State the annual range of temperature shown in Fig. 7.

.....°C [1]

(iii) Which **two** of the following statements describe the climate shown in Fig. 7? Tick **two** correct answers below.

	Tick
very low rainfall	
very low annual temperature range	
high temperatures all year	
cool dry summers	
hot winters with some rainfall	
hot summers with some rainfall	

[2]

(c) Give **two** reasons for the amount of rainfall in the areas shown in Fig. 6.

1 .....  
 .....  
 2 .....  
 .....[2]

[Total: 8 marks]

- 5 (a) Photographs B and C (Insert) show three types of cloud. Name and describe the clouds at **X** in Photograph B and at **Y** and **Z** in Photograph C.

Cloud at **X** (Photograph B)

Name .....

Description .....

.....

.....

.....

Cloud at **Y** (Photograph C)

Name .....

Description .....

.....

.....

.....

Cloud at **Z** (Photograph C)

Name .....

Description .....

.....

.....

.....[5]

- (b) Explain how clouds are formed.

.....

.....

.....

.....

.....

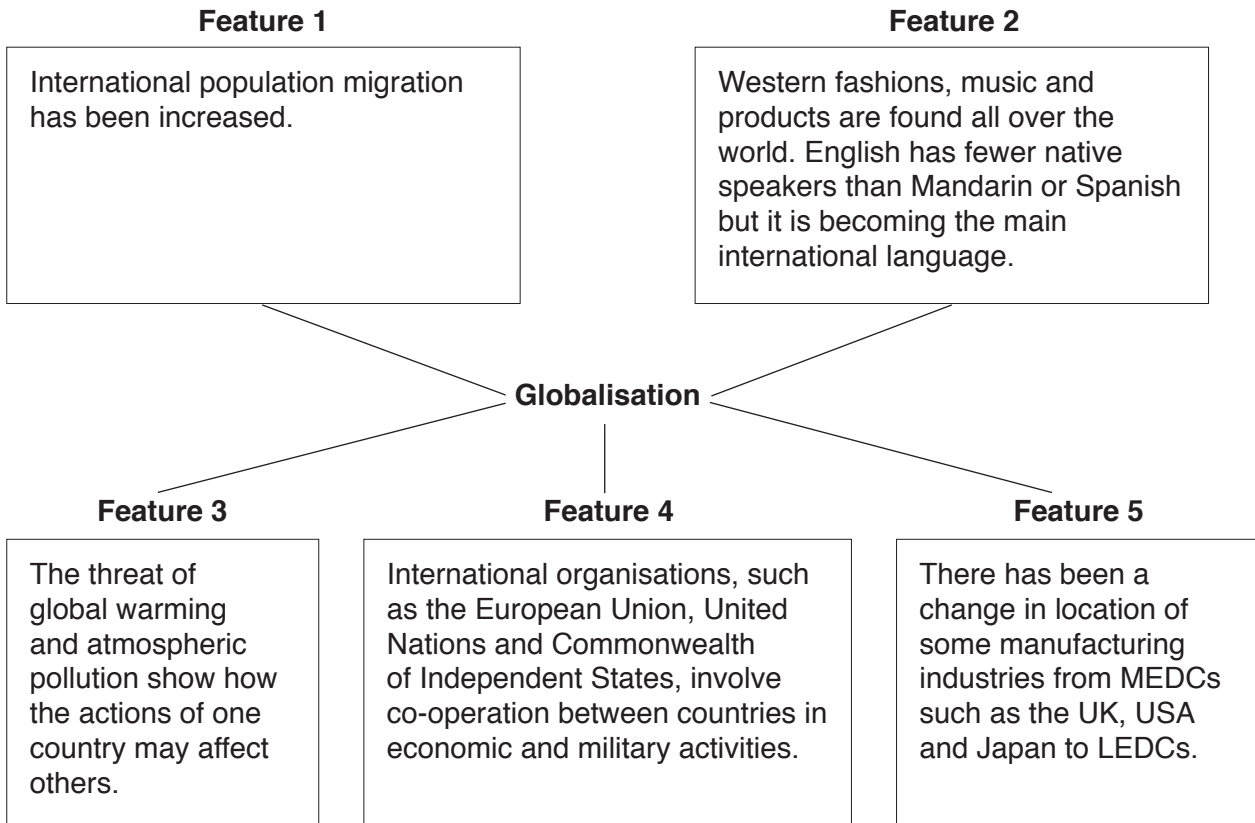
.....

.....[3]

[Total: 8 marks]

**TURN PAGE FOR QUESTION 6**

6 Study Fig. 8, which shows five features of globalisation.



**Fig. 8**

(a) Which **one** of features 1–5 shown in Fig. 8:

(i) has been a result of the work of transnational corporations;

feature number .....

[1]

(ii) shows how the environments of separate countries are linked?

feature number .....

[1]













**BLANK PAGE**

---

Permission to reproduce items where third-party owned material protected by copyright is included has been sought and cleared where possible. Every reasonable effort has been made by the publisher (UCLES) to trace copyright holders, but if any items requiring clearance have unwittingly been included, the publisher will be pleased to make amends at the earliest possible opportunity.

To avoid the issue of disclosure of answer-related information to candidates, all copyright acknowledgements are reproduced online in the Cambridge International Examinations Copyright Acknowledgements Booklet. This is produced for each series of examinations and is freely available to download at [www.cie.org.uk](http://www.cie.org.uk) after the live examination series.

Cambridge International Examinations is part of the Cambridge Assessment Group. Cambridge Assessment is the brand name of University of Cambridge Local Examinations Syndicate (UCLES), which is itself a department of the University of Cambridge.